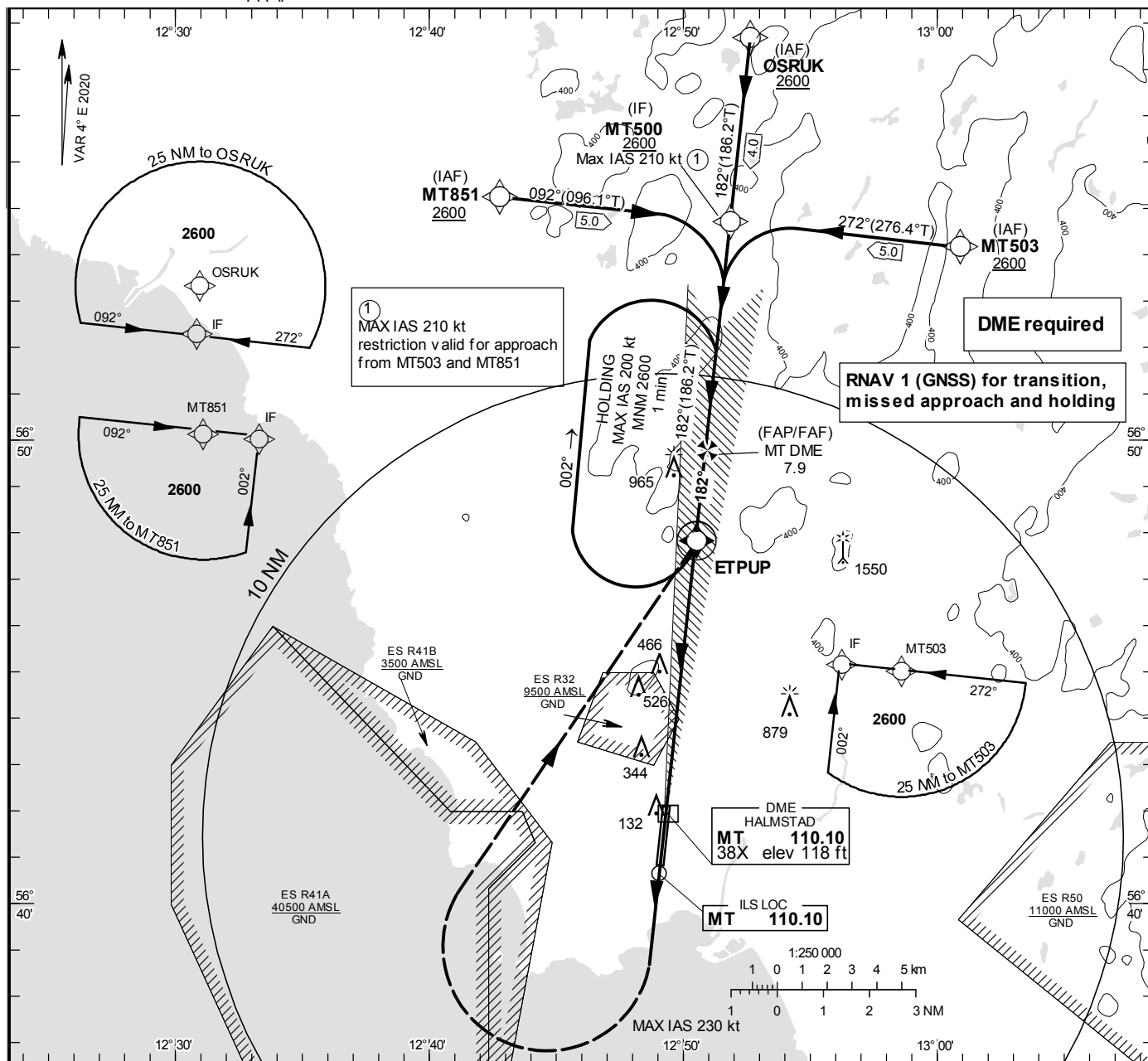


HALMSTAD**ILS z or LOC z
RWY 19****INSTRUMENT
APPROACH
CHART – ICAO**

**THR ELEV 84.2 ft, AD
ELEV 101 ft**
OCH are related to THR.
Circling OCH are related to AD
FI FV

HALMSTAD TOWER	130.105
	135.055

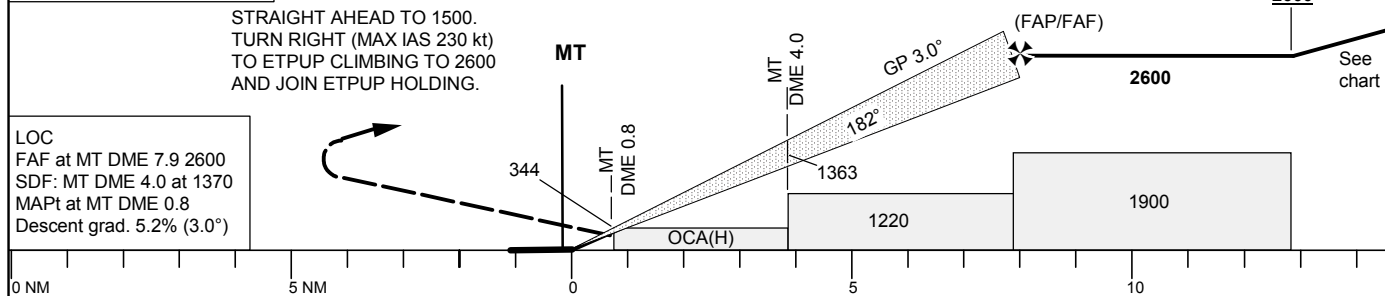
**TA 5000 ft AMSL****RDH 50.9 ft**

*Timing not authorized for defining the

OM replaced by MT DME 4.0
MM replaced by MT DME 0.8

STRAIGHT AHEAD TO 1500.
TURN RIGHT (MAX IAS 230 kt)
TO ETPUP CLIMBING TO 2600
AND JOIN ETPUP HOLDING.

LOC
FAF at MT DME 7.9 2600
SDF: MT DME 4.0 at 1370
MAPt at MT DME 0.8
Descent grad. 5.2% (3.0°)



OCA (H)					Final approach						
Cat of ACFT	A	B	C	D	DME MT NM	2	3	4	5	6	7
Straight-in Approach	232 (147)	243 (158)	255 (170)	269 (184)	ALT	730	1040	1370	1680	2000	2320
Circling	640 (540)	830 (730)	1280 (1180)	1280 (1180)	GS	kt	80	100	120	140	160
Circling Cat D Max IAS 195 kt					Time	min:s	5:19	4:15	3:33	3:02	2:39
					Rate of descent	ft/min	425	530	635	745	850

CHANGE: Editorial